



18 NORTH YORKSHIRE CONISTONE PIE

SHORT &
SWEET

3.2

M I L E S

NORTH EAST

▶ Distance: 3¼ miles/5.2km ▶ Time: 1½ hours ▶ Grade: Easy



The Dib from
Scot Gate Lane.

PHOTO: DENNIS KELSALL



CHOSEN BY... DENNIS KELSALL

Conistone Pie – is that with chips or custard? Wrong on both counts; it is a small, but nevertheless impressive outcrop of rock, which provides a stunning view across the Wharfedale Valley to the overhanging bulge of Kilnsey Crag. But it is not just the outstanding panorama that is the attraction of this walk, for the route up to it follows one of the prettiest trails in the area. The path climbs out of the tiny village of Conistone through a narrow break in the cliffs behind; a now-dry valley stepped with empty waterfalls where cascades once flowed. In

places, the walls comes so close together that you can touch both sides at once, but in contrast it also widens enough part-way up to accommodate a sloping meadow. Although only a short walk, it is definitely one to linger over.

1 Start

Head across a bridge spanning the River Wharfe into the village, bearing L at the small triangular enclosure containing the Maypole. As the lane then bends L, leave ahead and keep R past cottages to find a gate at the top by the Old School House, from which a path is signed into Conistone Dib.

PLAN YOUR WALK



ROUTE

Start/parking Roadside parking on lane west of Conistone village, grid ref SD 977674

Is it for me? Generally easy rocky paths with a couple of short, steeper sections; some easy scrambling for kids Suitable for Most active walkers
Stiles 1

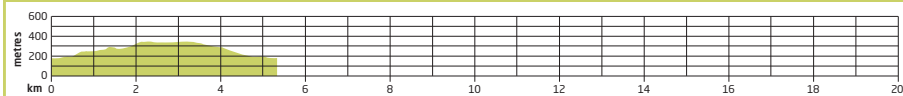
PLANNING

Nearest town Grassington
Refreshments Tennant Arms at Kilnsey (Tel: 01756 753 946) and Kilnsey Park Café (Tel: 01756 752 150)
Public toilets None
Public transport Bus stop on lane past Kilnsey
Maps OS Explorer OL2; Landranger 98

2 ¼ mile/400m

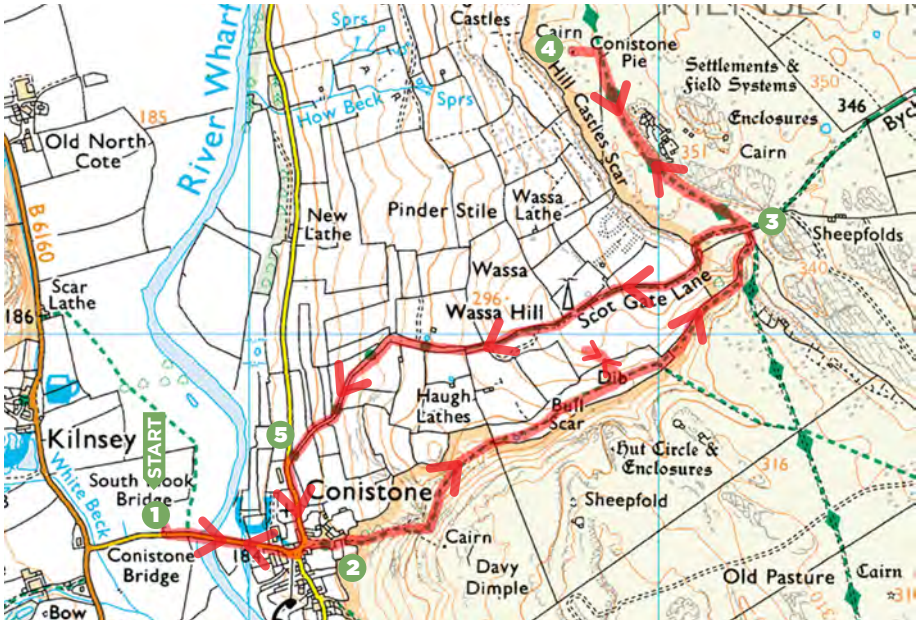
The path rises on into the narrowing gorge, clambering up a succession of limestone

GRADIENT PROFILE



18 NORTH YORKSHIRE CONISTONE PIE

► OS Explorer map OL2 ► Buy maps at: ordnancesurvey.co.uk/shop



© CROWN COPYRIGHT 2017. ORDNANCE SURVEY. MEDIA 00017

steps over which water once tumbled in shallow falls. Higher up, the valley sides move back to allow a couple of small meadows. Keep going, the way shortly closing in again for another short scramble into the upper valley. At the top, a rocky platform on the L gives a truly spectacular view back down the gorge. Just beyond, leave through a gate on the R. Walk around to the L above the top of the gorge to pick up the Dales Way and follow it L to another gate.

3 1 mile/1.6km

Through that, the crossing track is Scot Gate Lane, an old moorland trackway from

Nidderdale. To the L, it is the eventual way back. However, for the time being, keep ahead with the Dales Way, which runs on above Hill Castles Scar, while over to the R is an area of limestone pavement worth investigating. As the impressive outcrop of Conistone Pie comes into view ahead, the path closes with a wall. Clamber over a stile and bear L to your objective.

4 1½ miles/2.4km

After enjoying the superb view across the higher reaches of Wharfedale, retrace your steps to Scot Gate Lane and follow it down to the R. The way winds easily off the

hill, later steepening as it drops from Wassa Hill and offering a final glimpse across into the Dib.

5 2¾ miles/4.4km

Eventually emerging onto a lane, go L past St Mary's Church back into the village. The bridge and parking are around to the R. [CW](#)

**GET THIS WALK
ON YOUR PHONE:**
lfto.com/cwroutes

IN ASSOCIATION WITH



OS MAPS



Ordnance Survey