

03 DORSET LANGTON HERRING

Distance: 7½ miles/11.8km Time: 4 hours Grade: Moderate



Fleet near Moonfleet Manor Hotel, Point 3.

PHOTO: FIONA BARLTROP



CHOSEN BY... FIONA BARLTROP

Peacefully situated just inland from the Fleet lagoon is the lovely village of Langton Herring. It is one of the few 'doubly thankful' villages in England that did not suffer any fatalities during both World Wars. The excellent 17th-century pub, the Elm Tree Inn, has a long and interesting history, including being used as a contact point for Russian spies (members of the Portland Spy Ring) during the Cold War in the 1960s. Since refurbishment, the pub has developed a reputation for its excellent food, winning the Taste of the West gold award in 2022.

PLAN YOUR WALK

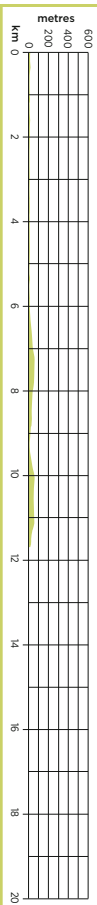


ROUTE

Start/parking Lay-by on road to Rodden N of village (past sewage works) DT3 4JB, grid ref SY610828. Walkers may park at pub if eating/drinking there – please notify staff on arrival
Is it for me? Gentle with easy slopes along field paths, tracks, country lane
Stiles 3

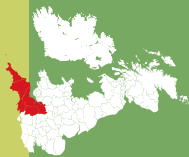
PLANNING

Nearest town Weymouth
Refreshments Elm Tree Inn, Langton Herring (01305 871257); Moonfleet Manor Hotel (01305 786948); Bagwell Farm – Red Barn & shop (01305 782575)
Public toilets None
Public transport Jurassic Coaster X53 Weymouth-Axminster and X52 open-top bus Weymouth-Bridport
Maps OS Explorer OL15; Landranger 194



GRADIENT PROFILE

SOUTH WEST



04 WILTSHIRE HOLT & GREAT CHALFIELD

Distance: 4½ miles/7.2km Time: 3 hours Grade: Easy



PHOTO: NIGEL VILE



CHOSEN BY... NIGEL VILE

This Wiltshire walk is a veritable food festival. There is the 'Wild Herb at the Field Kitchen' in Holt, with its focus on deli-style lunches using seasonal and local ingredients. Along the way is Merkins Farm Café, a family-run business whose 'Full English Breakfast' was voted one of the top seven in Britain by *Country Life* magazine. Back in Holt there are two pubs, the Tollgate having more of a restaurant feel while the Old Ham Tree is a traditional country pub with a menu to match. There are also Great Chalfield Manor and the Courts Garden in Holt, both National Trust

PLAN YOUR WALK

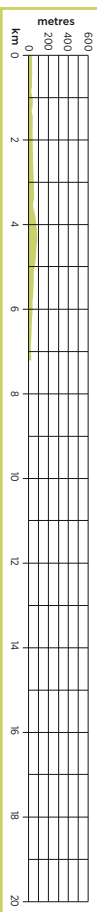


ROUTE

Start/parking Roadside parking in 'The Midlands', alongside Village Hall, grid ref ST861619, postcode BA14 6QH
Is it for me? A gently undulating walk, mostly on field paths. Briefly on roads/lanes
Stiles 7

PLANNING

Nearest town Bradford-on-Avon
Refreshments Wild Herb (01225 784081), Tollgate Inn (01225 782326), Old Ham Tree pub (01225 782581), all in Holt; plus Merkins Farm Café
Public transport Corsham-Trowbridge buses 68/69 to Holt (Mon-Sat, faresaver.co.uk); Frome-Melksham X69 (one each way Mon-Fri, fromebus.co.uk)
Public toilets None
Maps OS Explorer 156; Landranger 173



GRADIENT PROFILE

SOUTH WEST

04 WILTSHIRE HOLT & GREAT CHALFIELD

OS Explorer map 156 Buy maps at: ordnancesurvey.co.uk/shop

DON'T MISS...



Great Chalfield Manor and the Courts Garden in Holt, both National Trust properties. Check opening times online, as they often don't coincide.

2 ¾ mile/1.2km

Beyond this gate, turn R and walk along to gate just beyond farm track. Walk down R edge of next field, Lady's Coppice on R, to footbridge crossing Chalfield Brook. Walk uphill in next field to gate in top-L corner. Follow road ahead to entrance to Chalfield Manor. Where this road bears R, keep ahead along bridleway to Little Chalfield. Follow this bridleway for 1.2km to reach Atworth to Bradford road. Turn L and, ignoring R turn to Bath by cottage, continue for another 150m to footpath on R just before L bend.

3 2½ miles/3.6km

Follow this path uphill and across L edge of field to reach stile in 250m. Beyond this stile, follow an enclosed path along L edge of field to reach stile and road. Detour L to Merkens Farm Cafe, for main walk, turn R and, in 50m, turn L onto footpath, initially track. Enter field and follow line of hedge ahead and,

where it ends, keep ahead across field middle to stile in bottom boundary. Continue downhill in next field to gap in bottom L corner.

4 3¼ miles/5.2km

Head downhill in following field to stile before walking across next field, bearing L all the while, to gate and stile by pylon. Follow line of hedge ahead to stile before crossing following field to gap 75m along from its L corner. Cross next field to gap in L corner, bear L and walk across to L edge of fencing by property

before joining road on edge of Holt. Turn R down to B3107, L to the village green, cross and continue to Holt Church. Turn L along footpath to gate and field. 100m across this field, cross stile on L and follow path bordering 'The Courts' up to B3107. Cross to car park. [CW](http://www.cwroutes.co.uk)

VIEW THE WALK ON OS MAPS ONLINE!

walk1000miles.co.uk/cwroutes

IN ASSOCIATION WITH



© Country Walking June 2023

DATE WALKED

TIME TAKEN

YOUR RATING



© CROWN COPYRIGHT 2023 ORDNANCE SURVEY, MEDIA 007/23

03 DORSET LANGTON HERRING

OS Explorer map OL15 Buy maps at: ordnancesurvey.co.uk/shop

2 ½ mile/0.6km

Keep ahead along Coast Path (CP) which joins from R. Path follows R-hand side of fields, passing a plantation and bending R to Rodden Hive (info panel). From here it continues alongside Fleet lagoon, heading S to Langton Hive Point, there turning E then S again beside wall parallel to neck of Herbury headland. (Herbury was known locally as Donkey Island since this was where the donkeys from Weymouth Beach used to graze in winter.)

3 2¼ miles/3.7km

Just beyond Gore Cove Moonfleet Manor Hotel is passed on L – it shares its name with a famous smuggling adventure story called Moonfleet by Meade Falkner, first published in 1898. Continue along CP to Butterstreet Cove.

4 3½ miles/5.8km

Turn L inland up path to tiny East Fleet Church on L – all that remains of original after nave was destroyed in a great storm in 1824. Follow Butter Street up to Fleet Road and turn L up to Holy Trinity Church on R – built after destruction of East Fleet's. Continue up road.

5 4¼ miles/7.3km

At crossroads at top fork R along drive to West Fleet Holiday Farm, soon bending R



© CROWN COPYRIGHT 2023 ORDNANCE SURVEY, MEDIA 007/23

along concrete track. At junction keep ahead along track to Bagwell Farm.

6 5 miles/8km

Go through gap to L of gate (with yellow waymark) passing to R of large brick building, Red Barn, diagonally down across grass to concrete track. Cross and head down campsite drive to bottom, continuing along footpath (signed for Coast Path). Follow it down R-hand side of field to track at bottom.

7 5¼ miles/9.3km

Turn R up track past plantation – alternative path up L-side of trees provides better views. Continue uphill

to Langton Herring. To visit pub, turn R along lane, then retrace steps.

8 6½ miles/10.7km

Turn L on track, bending R then L to continue along private road. Where it turns L, cross stile by gate on R and head N down field, bending R then L to lane at bottom. Turn R to road junction and L back to start. [CW](http://www.cwroutes.co.uk)

VIEW THE WALK ON OS MAPS ONLINE!

walk1000miles.co.uk/cwroutes

IN ASSOCIATION WITH



© Country Walking June 2023

DATE WALKED

TIME TAKEN

YOUR RATING

