



24 DUMFRIES & GALLOWAY THE DEVIL'S BEEF TUB

▶ Distance: 4½ miles/7.2km ▶ Time: 2½ hours ▶ Grade: Moderate



SEE
FEATURE
ON PAGE 68

Following the 'Strait Step' down Great Hill.



PHOTO: TOM BAILEY

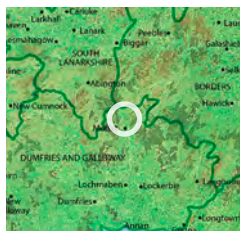


CHOSEN BY... PHILIP THOMAS

A deep hollow scooped into the Moffat Hills at the head of Annandale, the Devil's Beef Tub brims with history and legend. Also known as the Marquis of Annandale's Beef-stand, it was used by the Johnstone Clan of Border Reivers to hide cattle they had stolen on raids into England. It was also a place of great escapes – but not all of them successful. In 1685, Scottish Covenanter John Hunter was shot by the king's dragoons as he tried to outrun them on Great Hill. The 'Martyr's Stone' marks the site of his death and he's commemorated by monument by the road

on the hillside opposite. 61 years later, Jacobite Donald Maclaren fared better when he escaped his redcoat guards by rolling himself into the misty Beef Tub. Taking a safer route down, this walk climbs away from the A701 to the summit of Annanhead Hill. A precipitous path leads down to Corehead Farm before you take another rising gently back up to the high start point. The route follows sections of the 55-mile Annandale Way – one of Scotland's Great Trails. You could extend our described route by staying on the Annandale Way over Great Hill and Chalk Rig Edge to re-join after Point 3 (adds 1½ miles and avoids the exposed 'Strait Step' path).

PLAN YOUR WALK



ROUTE

Start/parking Lay-by on A701 five miles north of Moffat, grid ref NT056126
Is it for me? A gentle ascent is followed by a steep drop down a rough, precipitous path after which farm tracks climb gently back to start. Follows parts of the waymarked Annandale Way. Crosses main road
Stiles None

PLANNING

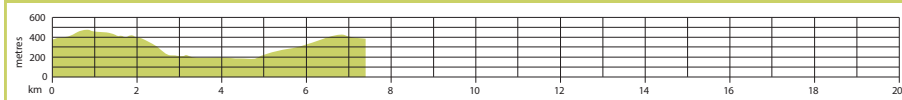
Nearest town Moffat
Refreshments None on route; plenty in Moffat
Public toilets None
Public transport None
Maps OS Explorer 330; Landranger 78

1 Start

From layby, head up road verge for 150m and turn R onto forestry track, signposted 'Annandale Way' (AW). Shortly, turn R again through gate and



GRADIENT PROFILE



24 DUMFRIES & GALLOWAY
THE DEVIL'S BEEF TUB► OS Explorer map 330 ► Buy maps at: ordnancesurvey.co.uk/shop

DON'T MISS...



Find out more about the area's past down the road at Moffat's free local museum: www.moffatmuseum.co.uk

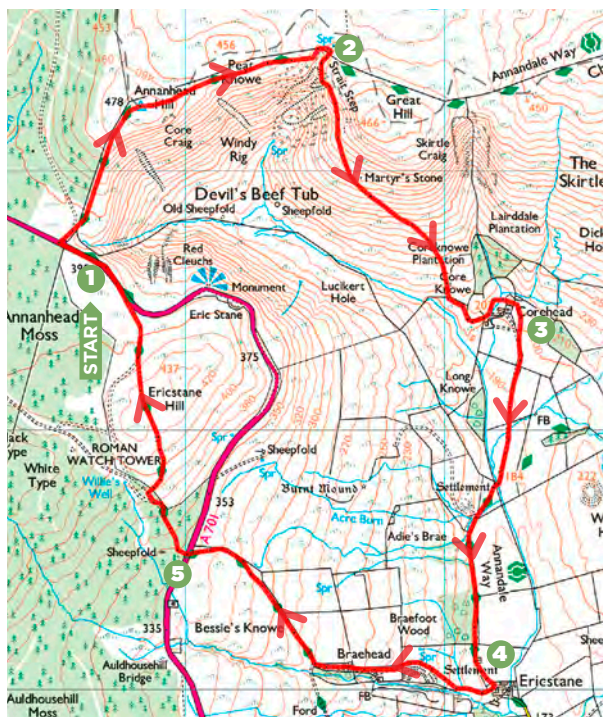
follow trail L along fence up to Annanhead Hill summit. From trig point, stay on trail descending ENE for 750m and cross head of gully (to grid ref NT065134).

2 1 mile/1.6km

Leave AW, turning R down a narrow, scrubby path (marked 'Strait Step' on map), contouring south across the steep hillside. After 400m, the terrain gets easier as the path curves southeast towards Corehead Farm. The largely nondescript Martyr's Stone (topped with a small cairn) is a few metres off the path to your L. Pass a tall signpost pointing you towards a gate at a corner of fences. Continue along edge of plantation, past signs, swinging L to Corehead Farm. Go L of redbrick house, through gate and follow signed access route around rear of properties: up stream, R over footbridge, through wall and R to gate onto farm track.

3 2 miles/3.2km

Turn L and follow the farm track south for about 1 mile to



©CROWN COPYRIGHT 2019 ORDNANCE SURVEY MEDIA 006/19

Ericstane Farm (passing info signs and crossing bridge on route, where you rejoin the Annandale Way).

4 3 miles/4.7km

Pass first cottage and after next cattle grid, swing R up track (marked by red footpath sign) between barns. Follow track up past 'Braehead' to gate/junction with AW. Turn R and follow track up to A701.

5 3¼ miles/6.1km

Cross road to pick up AW trail opposite. Follow this

waymarked track north, up to gate and across flank of Ericstane Hill, then down to A701. Cross road and turn L along verge back to layby (or detour R down verge to Devil's Beef Tub viewpoint/monument). **CW**

VIEW THE WALK ON
OS MAPS ONLINE:
lfto.com/cwroutes

IN ASSOCIATION WITH

Ordnance
Survey

©Country Walking December 2019

DATE WALKED

TIME TAKEN

YOUR RATING