



27 WORCESTERSHIRE RIVER AVON & BREDON HILL

■ Distance: 10 miles/16km ■ Time: 6 hours ■ Grade: Moderate 



Sunlight breaking through cloud on Bredon Hill.

PHOTO: ANDREW HARTT 1987 / SHUTTERSTOCK

SMALL ASCENT, GIANT VIEWS




**CHOSEN BY...
ROGER BUTLER**

This is a circuit with real variety: waterside meadows by the graceful banks of the River Avon combined with a climb to the top of Bredon Hill. This sprawling Oolitic outlier almost links the Cotswolds with the Malverns and its breezy summit offers panoramic views of both, together with views into South Wales. The walk begins in the beautiful village of Great Comberton and soon descends close to the riverbank for a long stroll past pollarded willows and wetland nature reserves. You might hear the odd curlew, and kingfishers are almost guaranteed. A track leaves the river to Eckington, after which you'll pass through a thriving vineyard on the lower slopes of Bredon Hill. A steep but easy ascent ends very close to the top – marked by a small tower, the earthworks of an Iron Age fort and a rock which really does resemble an elephant, complete with trunk. From here, after taking in the glorious views, it's downhill all the way back to Great Comberton.

1 Start Close to village hall, take path/stile down valley to footbridge. Veer right to another bridge with two small gates. Continue, above riverside, to makeshift gate in fence and kissing gate at lane. After 100m, turn R on path to River Avon and lock. Cross lock footbridge and steel footbridge, turn L to kissing gate and cross bridge to join track leading to lane.

2 1¼ mile/2km Take L fork and go straight over at T-junction to kissing gate and stile. Continue ahead, via two kissing gates, to lane. Turn R, then immediately L (signed Eckington Wharf) on narrow lane/track. Turn L on grass track after 150m, turn R near riverbank and take kissing gate on L leading to riverside path. Walk to road bridge, where path crosses to L bank.

3 2½ miles/4km There's now an easy ramble by the river, with a number of gates – you'll pass under an old railway viaduct, walk past a boat club and pass the slopes below the church at Strensham to reach the next lock, with a number of moorings close to the path. 



27 WORCESTERSHIRE RIVER AVON & BREDON HILL

OS Explorer map 190 Buy maps at: ordnancesurvey.co.uk/shop



4 3/4 miles/7.5km
Leave the river here, at a gate, and join a track – this becomes a lane after 300m. Keep ahead past houses to cross a footbridge over the railway in Eckington. Cross the next road (B4080) and follow village lanes, straight ahead, to no through road to Upper End Farm. Keep ahead at bend, go through gate and follow right of way, via one gate and a gap, to footbridge with two gates. Trend R over field to kissing gate at lane.

5 7 miles/11km
Go straight over to large gate at entry to deer park and vineyard. Veer L up to another

tal gate, go L and then immediately R uphill on lane with business units on R. Just before houses take stile on L, walk up to track and take stile with Wychavon Way sign. As track bends R go L via gate/stile and walk uphill. Follow fingerposts to kissing gate and head straight up to old iron gate. Turn L in trees and pass through two gates to the summit of Bredon Hill.

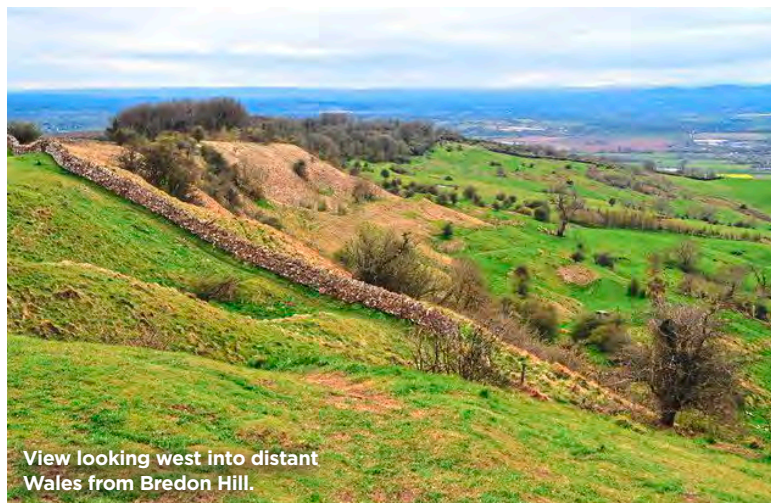
6 8 1/2 miles/13.5km
Continue ahead, past a dip (look for the elephant!), with wall on L. Wall bends sharp R – cross stone stile on L after 200m. Turn R along escarpment and then go L on

DON'T MISS...



Bredon Tithe Barn (National Trust) is nearby – an impressive medieval threshing barn built more than 650 years ago.

a steep descent to a gate. The path passes through further gates to join a grass track. Go through double gates and after 150m take stile on R. Another stile leads into the yard at Manor Farm. Walk to lane – fork L to return to start or R to wander through the village. [CW](#)



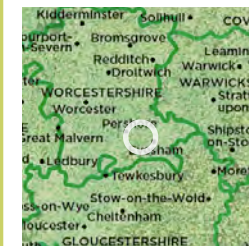
View looking west into distant Wales from Bredon Hill.

PHOTO: ROGER BUTLER



© CROWN COPYRIGHT 2023 ORDNANCE SURVEY. MEDIA 007/23

PLAN YOUR WALK



ROUTE

Start/parking Great Comberton village hall, grid ref SO953420, postcode WR10 3DP
Is it for me? Paths and tracks – riverside pasture and rough meadows; one steep climb
Stiles 8

PLANNING

Nearest town Pershore
Refreshments Two pubs in Eckington, halfway round: The Bell (01386 750033) and The Anchor Inn (01386 750356)
Public toilets None
Public transport Nearest station Pershore, but only limited bus 565 Pershore-Evesham to Great Comberton (1mstravel.co.uk)
Maps OS Explorer 190; Landranger 72

VIEW THE WALK ON OS MAPS ONLINE:

walk100miles.co.uk/cwroutes

IN ASSOCIATION WITH



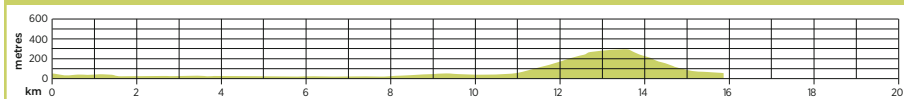
© Country Walking November 2023



Eckington bridge.

PHOTO: DAVE KNIBBS/SHUTTERSTOCK

GRADIENT PROFILE



DATE WALKED

TIME TAKEN

YOUR RATING