

22 MONMOUTHSHIRE/GLOS THE KYMIN & WYE VALLEY

■ Distance: 7¼ miles/11.5km ■ Time: 4¼ hours ■ Grade: Moderate

SEE
FEATURE
ON PAGE 32



Looking out over Monmouth from the Kymin.

PHOTO: TOM BAILEY



CHOSEN BY...

NICK HALLISSEY

We don't know much about Geoffrey of

Monmouth himself, but his famed 12th-century chronicle, *History of the Kings of Britain*, purports to tell the stories of monarchs like Brutus, Lear and most famously, Arthur. Although almost all of it is now considered absolute fiction, it made Geoffrey a medieval superstar and sparked a thousand myths and stories. What better way to celebrate this fascinating character than to look out over his home town from the magnificent hilltop viewpoint of the Kymin, before venturing deep into the Forest of Dean and the Wye

Valley beyond, where the line between history and legend has always been blurry?

1 Start

From car park, pass info board and head into woods to reach Naval Temple. Continue to reach 18th-century round house at summit of the Kymin. Continue on main path into woods. At first junction, turn R. Go through kissing gate onto open hillside and follow diagonal path. Pass through small copse and through gate, branch R to descend next field to trees. Go through kissing gate to emerge on crossing track. Turn R and follow track descending through woodland on Wysis Way to reach Staunton Road.

PLAN YOUR WALK



ROUTE

Start/parking Free parking at The Kymin National Trust car park, grid ref SO527123, postcode NP25 3SF

Is it for me? Mostly good footpaths/forest tracks; navigation tricky in places as forest track/paths differ between map and ground

Stiles None

PLANNING

Nearest town Monmouth

Refreshments None

Public toilets At The Kymin if open (but site is currently closed)

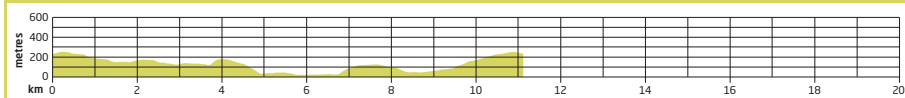
Public transport None to start; plenty to Monmouth but walk or taxi required to Kymin car park

Maps OS Explorer OL14; Landranger 162

2¼ mile/1.2km

Turn L across road and continue on far side (Wysis Way, WW). Descend to crossing track and turn R

GRADIENT PROFILE

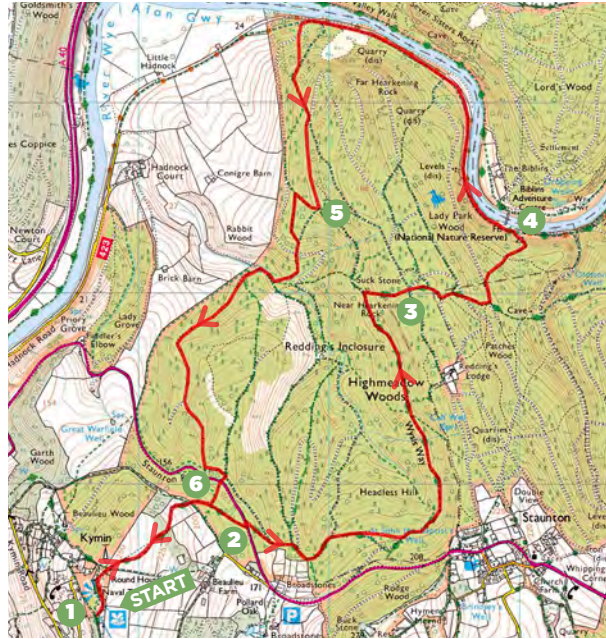


■ OS Explorer OL14 ■ Buy maps at: ordnancesurvey.co.uk/shop

(WW). At next crossing track, turn R (WW). At next crossing, turn L (WW). Follow track N for just under 1 mile to reach prominent rock R (Near Harkening Rock). Turn R (E) on steep path by rock (WW). Path zig-zags up through trees to vast crag at brow of hill.

3 2½ miles/3.8km
Continue uphill L of crag to top of ridge. Turn L on crossing track and follow round to R. Track is joined by another track from L and veers R, with large enclosed plantation L. Where fence veers L, take first footpath L (fingerpost) through Lady Park Wood National Nature Reserve. Descend to junction of paths and turn L, keeping fence L. Descend sharply to reach main track by River Wye.

4 3 miles/5km
Turn L and follow riverside track, passing footbridge R. Continue on track, ignoring branching paths, for just over 1 mile. At grid ref SO537154, turn L on narrow path climbing sharply away from river, to reach old railway trackbed. Turn R and continue parallel with riverbank. After short distance, turn sharp L to follow clear path up hillside. Round hairpin bend and continue past vehicle gate (fence L). Where fence veers sharp L, take path L off track. At crossing track, turn R. Continue on track with fence R. Reach prominent



junction of paths in clearing at grid ref SO539144.

5 5 miles/8km
Turn sharp R downhill with fence R. After short distance, take first path L into woods. Cross track and continue downhill through woods on far side. Path veers R into valley bottom. At crossing track, turn R. Follow for just under ½ mile to fork, turning L and climbing steadily through steepening coombe. At top, turn R at junction to Staunton Road.

6 6½ miles/10.3km
Cross road and continue on far side on path (not marked

on map). Pass through triple earthwork ditch (not on map) and climb steadily, reaching outbound track. Turn L through kissing gate and climb diagonally over field. Retrace steps across field and through woods (kissing gates) and follow path through woods back to Round House, Naval Temple and car park. **CW**

VIEW THE WALK ON OS MAPS ONLINE:
walk1000miles.co.uk/cwroutes

IN ASSOCIATION WITH



© Country Walking January 2023

DATE WALKED

 TIME TAKEN

YOUR RATING